

EAGLE Aluminum Signal FL Series Vehicle Traffic

Features

Meets or exceeds ITE specifications.

Design provides minimum weight but maximum rigidity and strength.

HOUSING – One piece die-cast unit with serrations in 5° increments at each end. Each housing has provisions for mounting two terminal blocks and attaching backplates. Housings may be fastened together to make multi-section signals. The 8” and 12” housings can be intermixed to form combination signals.

DOOR – One piece die-cast aluminum unit equipped with stainless steel hinge pins. Two stainless steel captive eyebolts and wing nuts permit easy access to the inside of the housing.

VISOR – One piece formed aluminum unit. The removable twist-on visor is secured to the door with stainless steel hardware. Cut-away, tunnel, and full circle visors are available.

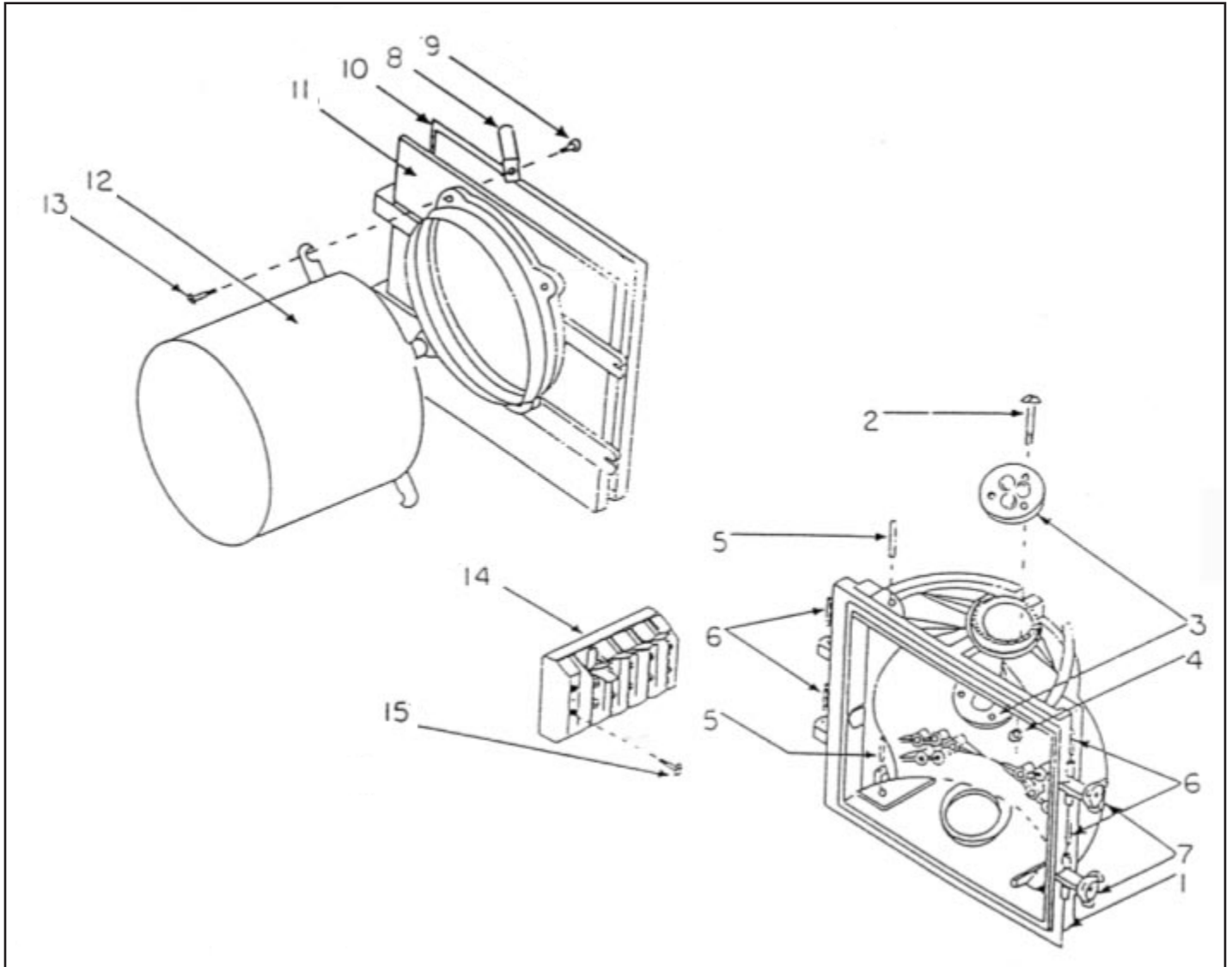
GASKETS – A molded one piece lens gasket is used to seal the lens to the reflector assembly and door to form a sealed unit. A second gasket between the door and the housing assures the weather tight quality of the unit.

POSITIVE POSITIONING – Positive positioning and locking is achieved through the use of serrated brackets, mast arm, or span wire fittings.

HARDWARE – Stainless steel material inside and outside.

COATING – Powder paint both inside and outside.





FL Series Signal Diagram

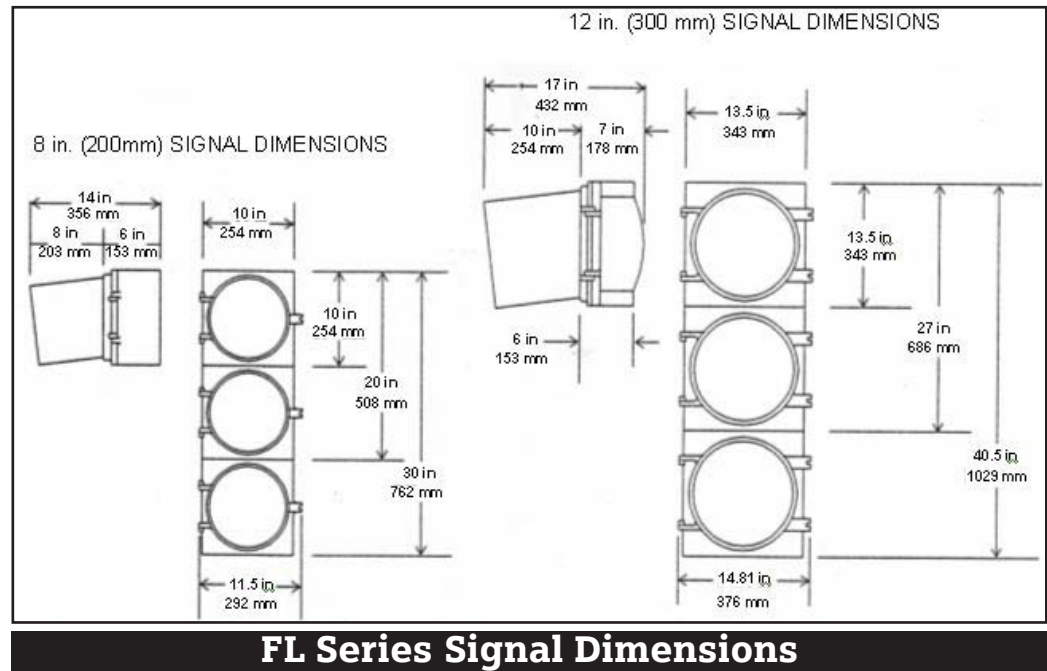
FL SERIES REPLACEMENT PARTS

Ref. No.	Description	Part Number	
		8" (200 mm)	12" (300 mm)
1	Signal Housing	A701820R	A701821R
2	Carriage Bolt (1/4 - 20 x 1 3/4")	A701101SS	A701101SS
3	Clamping Washer	M50417	M50417
4	Hex Nut (1/4 - 20)	A143416SS	A143416SS
5	Type 2 Grove Pin, SS (8" - 3/16 x 1")	A844030	N/A
	Type 2 Grove Pin, SS (12" - 3/16 x 1 3/16")	N/A	A702181
6	Spiral Pin, SS (3/16" x 1")	A144006	A144006
7	Wingnut Eyebolt Assembly	A844263	A844263
8	Lens Clip, Generic	A844361SS	A844361SS
9	Lens Clip Screw, SS (10 - 3/8")	A144479TF	A144479TF
10	Door Gasket	A701630	A701630
11	Signal Door	A844242R	A844322R
12	Visor - Tunnel	A852291 XX	A852307 XX
	Visor - Cap	A852281 XX	A852305 XX
	Visor - Full Circle	A852283 XX	A852319 XX
13	Visor Screw (10 - 32 x 3/8")	A146082TF	A146082TF
14	Terminal Block, 4-position Spade Type*	A182944TX	A182944TX
15	Machine Screw, SS (6 - 32 x 3/4")	A16257312SS	A16257312SS

* Terminal blocks - A four position spade type terminal block standard. A six position spade type is available as an option.

COLOR CODES	
XX	Color
10	Medium Green
11	Dark Green
12	Yellow
13	Gloss Black
14	Flat Black

The standard signal is composed of three die-cast aluminum LED-ready body sections containing the door and visor. The basic construction design provides minimum weight combined with maximum rigidity and strength. It meets or exceeds ITE specifications.



FL Series Signal Dimensions

WEIGHTS		
Piece	8" (200 mm)	12" (300 mm)
Single Section	6.3 lbs. (2.86 kg)	7.5 lbs. (3.4 kg)
Housing Only	4.2 lbs. (1.91 kg)	5.3 lbs. (2.41 kg)
Door Only	1.1 lbs. (0.5 kg)	1.5 lbs. (0.68 kg)
Visor Only	0.8 lbs. (0.36 kg)	1.4 lbs. (0.64 kg)

For more advanced future features and/or more information on Siemens products call (512) 837-8310 or call your local dealer (see website for the dealer in your area).

Siemens reserves the right to alter any of the Company's products or published technical data relating thereto at any time without notice.

Siemens Energy & Automation, Inc.
Business Unit Intelligent Transportation Systems

8004 Cameron Road
Austin, TX 78754
Ph: (512) 837-8310
Fax: (512) 837-0196
<http://www.itssiemens.com>