



Energy 5 GHz

300 Mbps Wireless Broadband System 5.180-5.825GHZ

OVERVIEW

The ENERGY 300 Mbps Outdoor Radio Series is a high performance Access Point and Subscriber unit designed for faster throughput and greater coverage in outdoor environments. The 300 Mbps bandwidth is able to accommodate the most demanding of applications such as video streaming or backhaul applications with the reliability and security that ENCOM provides.

PERFORMANCE AND DEPENDABILITY

ENCOM's ENERGY Solution has been designed to provide high speed communications for today's bandwidth demanding applications. ENCOM's ENERGY Solution follows in the footsteps of our Broadband line of products by adhering to IEEE 802.11 standards and offering features like DFS, Traffic Prioritization and OFDM technology

while also adding GPS support, Dual Ethernet ports, POE out, built-in RSSI LED tool, 802.11n capabilities and a built-in audio alignment tool placing the ENERGY product line as the best in class wireless radio solution for enterprises and data critical applications.

ENCOM STRATOS+ SOFTWARE

ENCOM's STRATOS+ software makes setting up and configuring your wireless network a breeze. With profile based configurations, built-in diagnostic and alignment tools as well as network mapping and robust security features STRATOS+ makes monitoring and maintaining your network an easy and centralized process.

ENCOM's proven wireless hardware solutions coupled with unparalleled management and diagnostic software (included free of charge with all units) provide the fast and reliable networks that enterprises and municipalities all over North America have come to

Key Features:

- Up to 300Mbps
- RSSI LEDs and Reset functionality
- Embedded GPS
- Power LED
- 10/100/1000 PoE+Data Out
- Each radio can perform as Master, Remote or Repeater
- Range in excess of 20 miles (LOS)
- Power over Ethernet.
- Every unit supplied with STRATOS+ diagnostics, monitoring and maintenance tool free of charge
- Extensive suite of security features

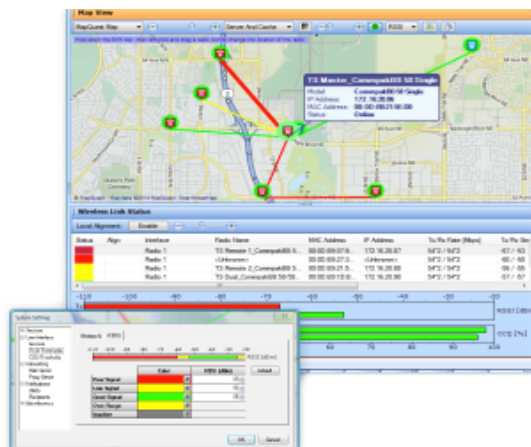
Key Benefits:

- Celebrating 25 years of broad industrial wireless experience.
- Unparalleled software management tools
- Scaleable and future proof technology platforms
- Unequaled warranty and support programs
- Easily defined and measurable ROI
- Interoperable with solutions from other vendors

Applications:

- Intelligent Transportation Systems
- Water/Waste Water Management
- Utilities
- Industrial SCADA
- Private Networks

*Celebrating
25 years
of
Industry Leadership*



STRATOS+ Management Software

WWW.ENCOMWIRELESS.COM

Energy 5 GHz

300 Mbps Wireless Broadband System 5.180-5.825GHz

Physical Specifications			
	Non-Integrated Unit	Integrated Antenna Unit	Access Point Cluster
Dimensions: Weight: Environmental: Antenna Type: Operating Temperature: Radio Units:	<ul style="list-style-type: none"> 8.5"x8.5"x3" Weight: 3 lb. IP67 Weatherproofing rating External Panel, Sector, OMNI -40°C to +85°C Up to 2 	<ul style="list-style-type: none"> 13"x13"x3.5" Weight: 5 lb. IP67 Weatherproof rating 23 dBi Panel Antenna -40°C to +85°C Up to 2 	<ul style="list-style-type: none"> 12.5"x9.3"x5.8" Weight: 8 lb. IP67 Weatherproof rating External Sector Antenna -40°C to +85°C Up to 4
Wireless Interface		Networking Features	
Frequency Range	5.150 - 5.825GHz	802.11e	WMM and QOS
Peak Transmit Power	27 dBm (500 mW)	802.11h	DFS and TPC
Receive Sensitivity	-94 dBm (MCS0) to -76 dBm (MCS15)	802.1d	Ethernet Bridging
Channel Widths	5MHz, 10MHz, 20MHz and 40MHz	802.1p	Traffic Prioritization
Modulations	OFDM, BPSK, QPSK, 16QAM, 64QAM	802.1q	VLAN
Protocol	802.11a/n, eMAX (proprietary)	802.1s	Spanning Tree
Data Rate	Up to 300Mbps (MCS0-15)	802.1w	Rapid Spanning Tree
MIMO	2x2	802.3-1998	Ethernet
Topology	Point-to-Point, Point-to-Multipoint	802.3ab	Gigabit Ethernet
Security <ul style="list-style-type: none"> Bursting Compression Dynamic Ack Timeout TLS EAP Method Passthrough EAP Method Hardware Retries Preamble Mode Periodic Calibration Disconnect Timeout On-fail Retry CSMA Disable Station Channel Scan List EMAX proprietary protocol 		802.3ac	Extended Frame Size for 802.1q & 802.1p support
		802.3ad	Link Aggregation/Port Bonding/Port Trunking
		802.3i	10 Mbps Ethernet
		802.3u	100 Mbps Ethernet and Auto-Negotiation
		802.3x	Full Duplex and Flow Control
		Additional Networking Features <ul style="list-style-type: none"> HTTP Telnet, SSH and FTP/TFTp SNMP Two RJ45 10/100/100Mbps Ethernet. -Port #1: PoE In & Data -Port #2: PoE Out (802.3af) & Data Syslog Routing Firewall / NAT NTP VPN DHCP Client / Server OSPF 	
Ordering Options <ul style="list-style-type: none"> ENERGY INT: Single Radio with Integrated Dual Polarity Antenna ENERGY EXT: Single Radio with External Type-N(F) connector (x2) ENERGY INT DUAL: Dual Radio with (1x) Integrated Dual Polarity Antenna and (2x) External Type-N(F) connectors ENERGY EXT DUAL: Dual Radio with (4x) External Type-N(F) connectors. ENERGY LPT OPTION: Luminaire Power Tap accessory available. 		<p>ENCOM Wireless Data Solutions Inc. 3750 Arapaho Rd. Addison, TX 75001, United States. Phone (972) 885-5170 Fax (214) 736-5749 Email: sales@encomwireless.com WWW.ENCOMWIRELESS.COM</p>	



*ENCOM Broadband radios require professional installation.
 Specifications subject to change without notice. Visit www.encomwireless.com for updates.