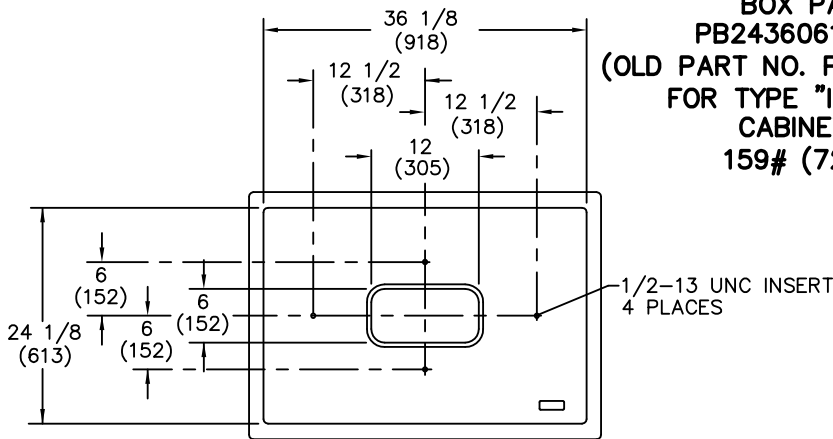
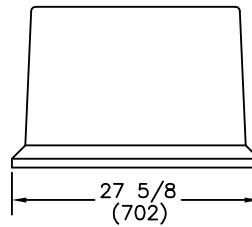
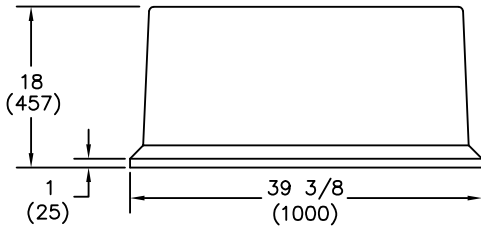
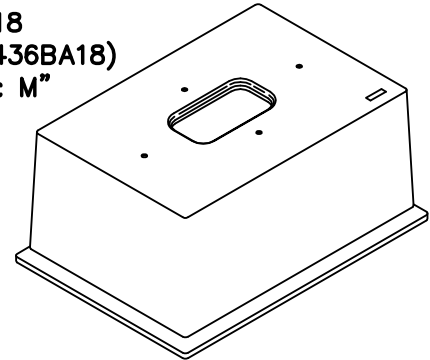


## SPECIFICATIONS/DATA

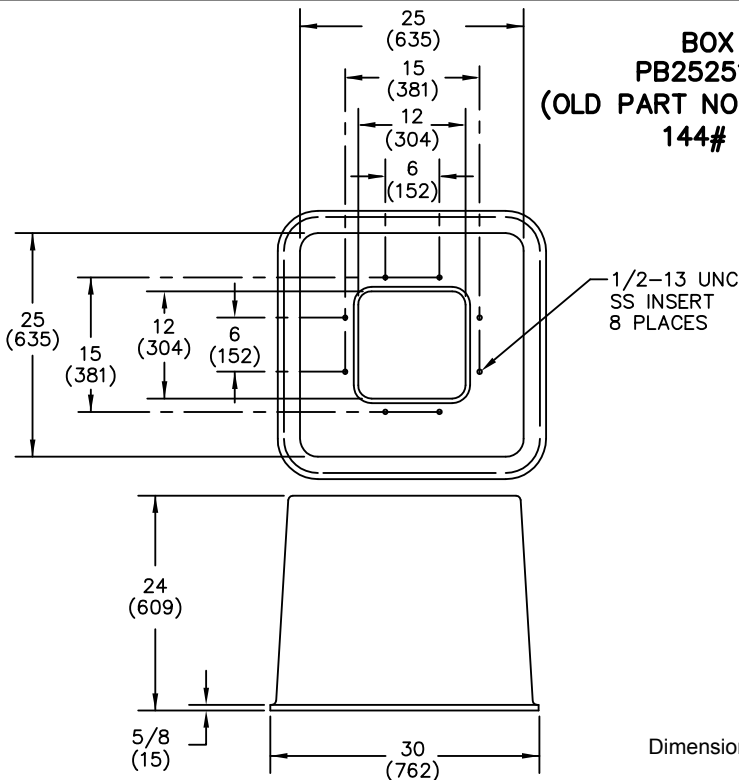
## Traffic Signal Cabinet Bases



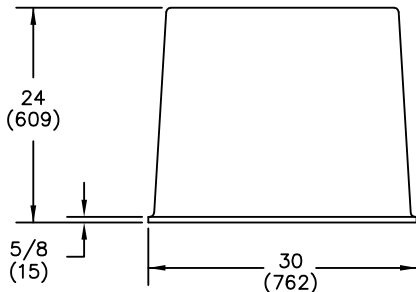
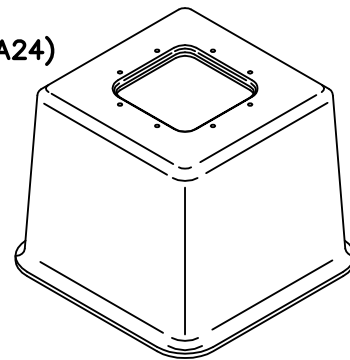
**BOX PAD**  
**PB24360612B18**  
 (OLD PART NO. PB2436BA18)  
 FOR TYPE "IV & M"  
 CABINETS  
 159# (72.1)



TRANSPORTATION INDUSTRY PRODUCTS



**BOX PAD**  
**PB25251212B24**  
 (OLD PART NO. PB2525BA24)  
 144# (66.3)



Dimensions and weights in parentheses are metric equivalent.

Information shown in catalog is a partial listing. If pad or throat size desired is not listed, contact Quazite field sales office.

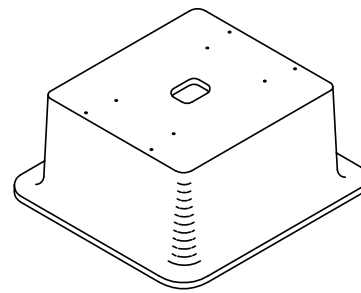
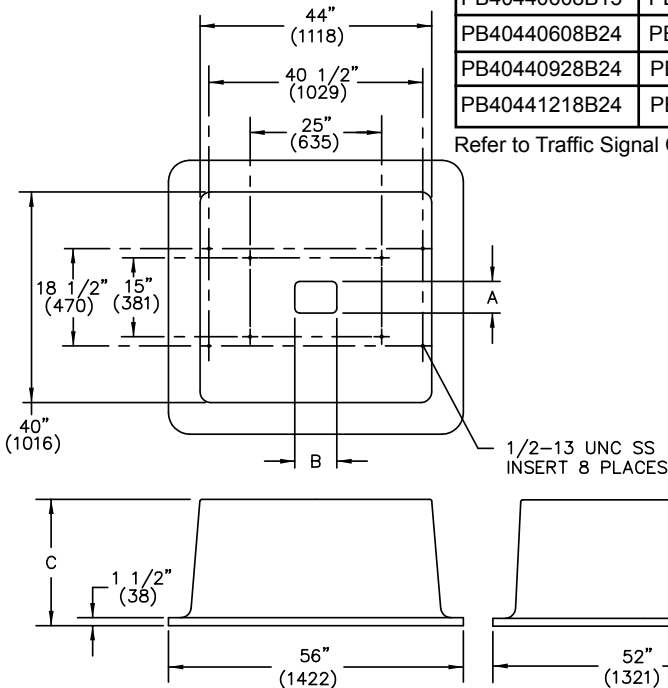
APRIL 2008

# SPECIFICATIONS/DATA

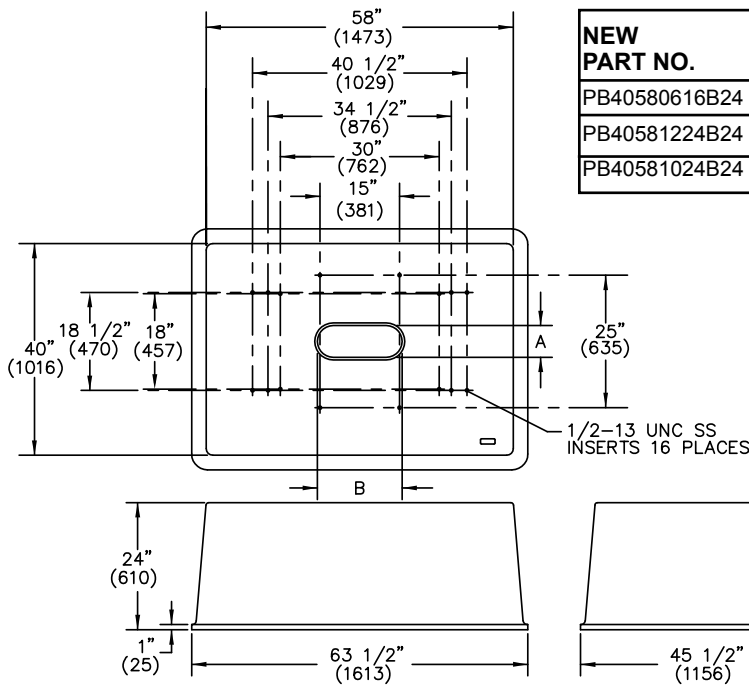
## Traffic Signal Cabinet Bases

NEW PART NO.	OLD PART NO.	WEIGHT #	DIM. A	DIM. B	DIM. C
PB40440608B15	PB4044BA15	281 (127.0 kg)	6" (152 mm)	8" (203 mm)	15" (381 mm)
PB40440608B24	PB4044BA24	378 (171.0 kg)	6" (152 mm)	8" (203 mm)	24" (610 mm)
PB40440928B24	PB4044B503	385 (174.6 kg)	9" (229 mm)	28" (711 mm)	24" (610 mm)
PB40441218B24	PB4044B501	366 (166 kg)	12" (305 mm)	18" (457 mm)	24" (610 mm)

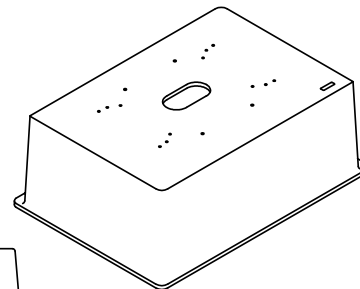
Refer to Traffic Signal Cabinet Base Cross Reference Guide on pages 80 - 81.



TRANSPORTATION INDUSTRY PRODUCTS



NEW PART NO.	OLD PART NO.	WEIGHT #	DIM. A	DIM. B
PB40580616B24	PB4058BA24	450 (204.1 kg)	6" (152 mm)	16" (406 mm)
PB40581224B24	PB4058B502	435 (197.3 kg)	12" (305 mm)	24" (610 mm)
PB40581024B24	PB4058B504	440 (199.6 kg)	10" (254 mm)	24" (610 mm)



Dimensions and weights in parentheses are metric equivalent.