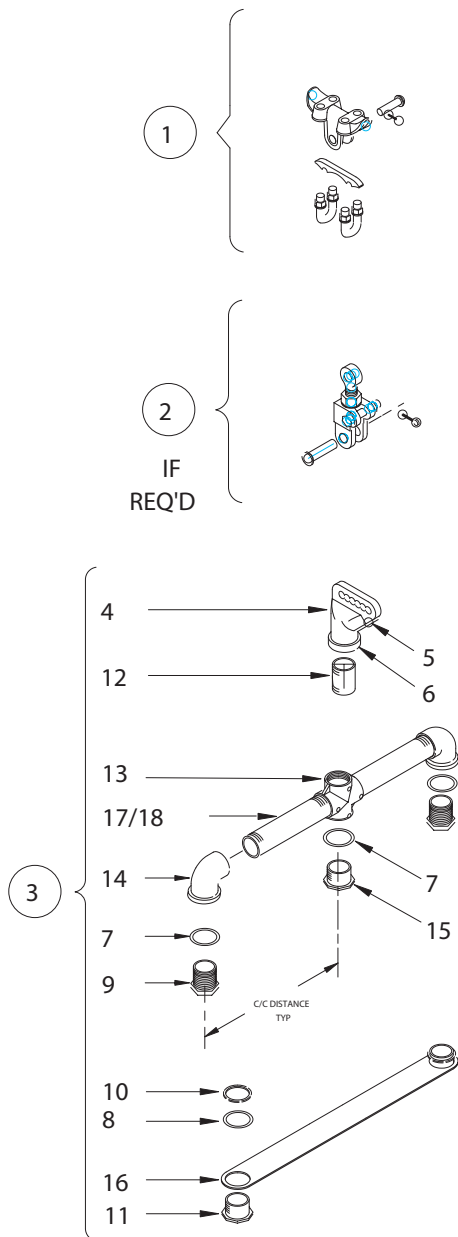


EAGLE SPAN WIRE SUSPENSION TWO-WAY (IRON) BULLETIN 2405



ITEM	DESCRIPTION	PART NO.
①	CABLE SUSPENSION CLAMP	A31926
②	BALANCE ADJUSTER	A32000
③	2-WAY TOP & BOTTOM	A34128X
4	WIRE ENTRANCE	M32162
5	INSULATOR BUSHING	M10738
6	SQ HD SET SCREW (1/4-20)	M50360
7	NEOPRENE WASHER	M60615
8	FLAT WASHER	M30473
9	LOCK NIPPLE	M32241
10	CONDUIT NUT	M31040
11	ORNAMENT CAP	M20872
12	NIPPLE	P380250
13	CROSS, SERRATED	M31304
14	ELBOW, SERRATED	M31111
15	ORNAMENT CAP	M20888
16	2-WAY TIE BRACE	A7021497 M24472D
17	PIPE ARM FOR 8.5 C/C	P360550
18	PIPE ARM FOR 10.5 C/C	P360750

*Bulletin 2405x

*x = "B" for 8½" C/C distance
x = "D" for 10½" C/C distance