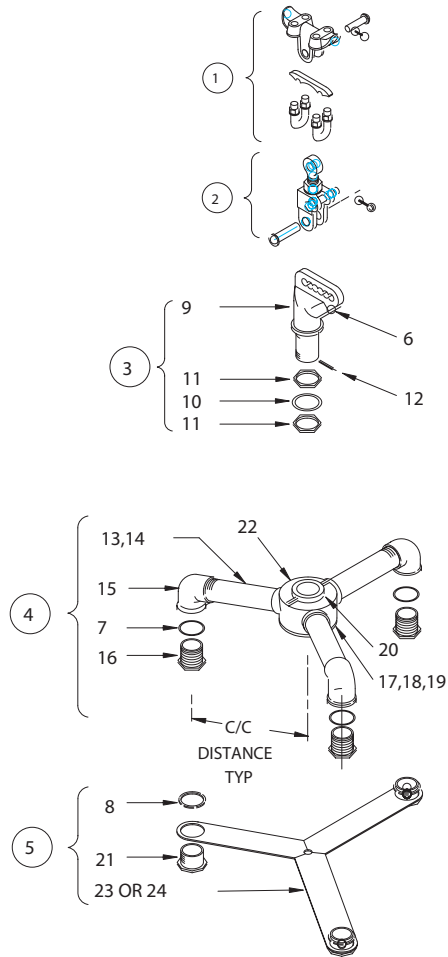


EAGLE SPAN WIRE SUSPENSION THREE-WAY (IRON) BULLETIN 2406



ITEM	DESCRIPTION	PART NO.
①	CABLE SUSPENSION CLAMP	A31926
②	BALANCE ADJUSTER	A32000
③	MULTI-WAY WIRE ENTRANCE	A32125
④	3-WAY TOP BRACKET ASSEMBLY	U3317x*
⑤	3-WAY BOTTOM BRACKET ASSEMBLY	L2301x*
6	BUSHING	M10738
7	NEOPRENE WASHER	M60615
8	CONDUIT NUT	M31040
9	WIRE ENTRANCE	M32142
10	LEAD WASHER	M81743
11	LOCKNUT (2)	M30244
12	5/32 COTTER PIN	M50553
13	PIPE ARM FOR 8.5 C/C	P360550
14	PIPE ARM FOR 10.5 C/C	P360750
15	ELBOW, SLOTTED	M31112
16	LOCKNIPPLE	P380250
17	COVER	M23367
18	SCREW (3/8-16)	M50134
19	3/8 LOCK WASHER	M51780
20	SET SCREW (1/4-20)	M50360
21	ORNAMENT CAP	M20872
22	3-WAY CENTER HUB	M34778
23	SPACER FOR 8.5 C/C	M24470B
24	SPACER FOR 10.5 C/C	M24470D
25	SERRATED RING	M20466

*Bulletin 2406x

*x = "B" for 8½" C/C distance
x = "D" for 10½" C/C distance