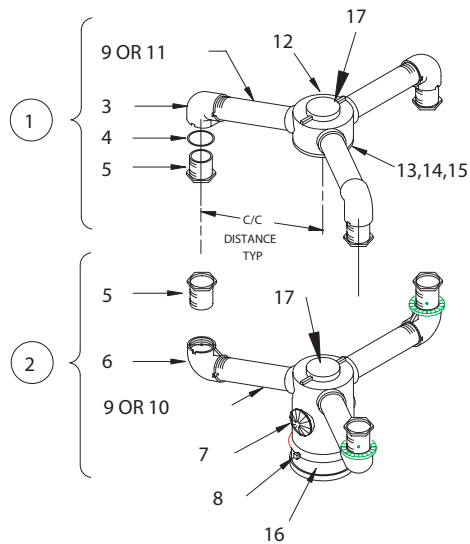


EAGLE POST TOP BRACKET THREE-WAY (IRON) BULLETIN 2203



ITEM	DESCRIPTION	PART NO.	ITEM	DESCRIPTION	PART NO.
①	3-WAY TOP BRACKET ASSEMBLY	U3317x*	9	PIPE ARM FOR 8.5 C/C	P360750
②	3-WAY BOTTOM BRACKET ASSEMBLY	L3314x*	10	PIPE ARM FOR 10.5 C/C	P360891
3	ELBOW (PLAIN)	M31110	11	PIPE ARM FOR 10.5 C/C	P360916
4	GASKET	M60615	12	3-WAY CENTER HUB	M34778
5	LOCK NIPPLE	M32241	13	COVER	M23333
6	ELBOW (SERRATED)	M31111	14	SCREW (10-32)	M50105
7	ORNAMENT CAP	M20816	15	LOCK WASHER (#10)	M51741
8	SET SCREW (3/8-16)	M50120	16	COLLAR	M31411
			17	ORNAMENT CAP ASSEMBLY	A20833

*Bulletin 2203x

*x = "B" for 8½" C/C distance
x = "D" for 10½" C/C distance