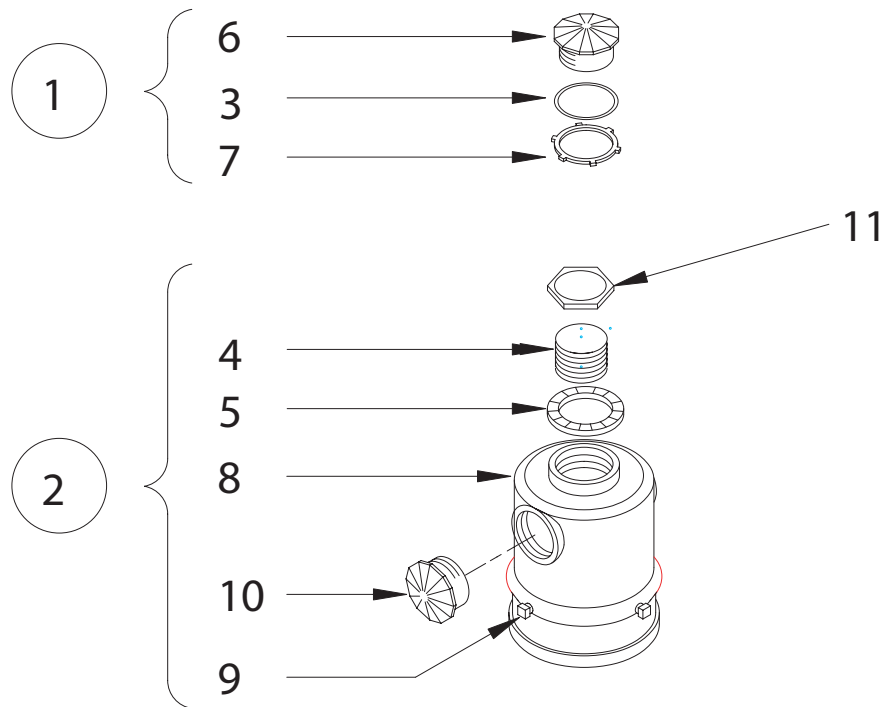


## EAGLE POST TOP BRACKET ONE-WAY (IRON) BULLETIN 2201



ITEM	DESCRIPTION	PART NO.
①	SIGNAL CLOSURE	A20833
②	1-WAY BOTTOM BRACKET ASSEMBLY	
	PLAIN COLLAR W/2 SET SCREW HUB	A31436
	SERRATED COLLAR	A31435
3	GASKET	M60615
4	NIPPLE	P380250
5	LOCK RING	M20466
6	ORNAMENT CAP	M20872
7	CONDUIT NUT	M31040
8	COLLAR	M31410
9	SET SCREW (3/8-16)	M30120
10	ORNAMENT CAP	M20888
11	LOCKNUT	M30244
12	FLAT WASHER	M30473

\*Bulletin 2201x

\*x = "S" for serrated collar  
x = "P" for plain collar