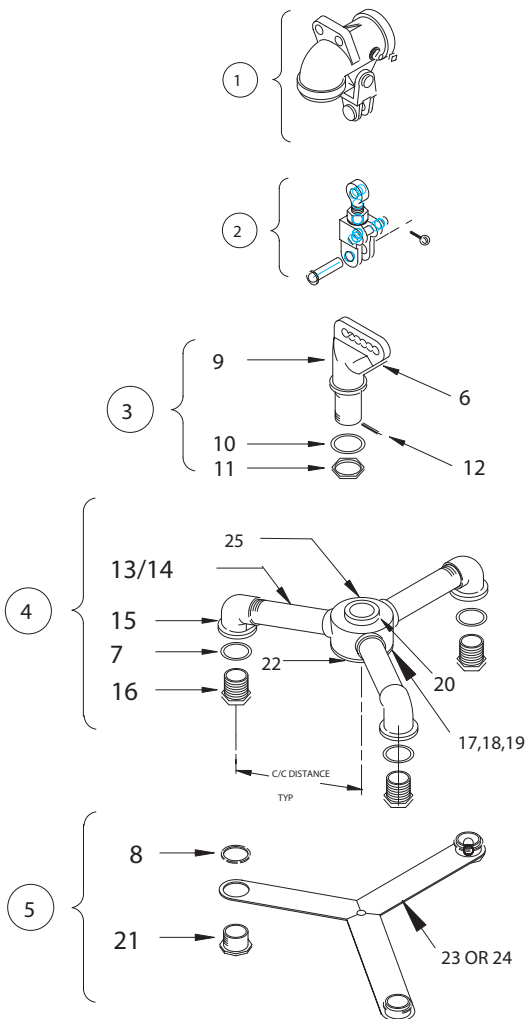


EAGLE MAST ARM THREE-WAY SUSPENSION (IRON) BULLETIN 2305



| ITEM | DESCRIPTION | PART NO. |
|------|-------------------------------|----------|
| ① | MAST ARM FITTING ASSEMBLY | A32524 |
| ② | BALANCE ADJUSTER | A32000 |
| ③ | MULTI-WAY WIRE ENTRANCE | A32125 |
| ④ | 3-WAY TOP BRACKET ASSEMBLY | U3317x* |
| ⑤ | 3-WAY BOTTOM BRACKET ASSEMBLY | L2301x* |
| 6 | BUSHING | M10738 |
| 7 | NEOPRENE WASHER | M60615 |
| 8 | CONDUIT NUT | M31040 |
| 9 | WIRE ENTRANCE | M32142 |
| 10 | LEAD WASHER | M81743 |
| 11 | LOCKNUT | M30244 |
| 12 | COTTER PIN (5/32) | M50553 |
| 13 | PIPE ARM FOR 8.5 C/C | P360550 |
| 14 | PIPE ARM FOR 10.5 C/C | P360750 |
| 15 | ELBOW, SERRATED | M31112 |
| 16 | LOCKNIPPLE | P380250 |
| 17 | COVER | M23367 |
| 18 | SCREW (3/8-16) | M50134 |
| 19 | LOCK WASHER (#10) | M51780 |
| 20 | SET SCREW (1/4-20) | M50360 |
| 21 | ORNAMENT CAP | M20872 |
| 22 | 3-WAY HUB CENTER | M34778 |
| 23 | SPACER FOR 8.5 C/C | M24470B |
| 24 | SPACER FOR 10.5 C/C | M24470D |
| 25 | FLAT WASHER | M30473 |
| 26 | SERRATED RING | M20466 |

*Bulletin 2305x

*x = "B" for 8½" C/C distance
x = "D" for 10½" C/C distance