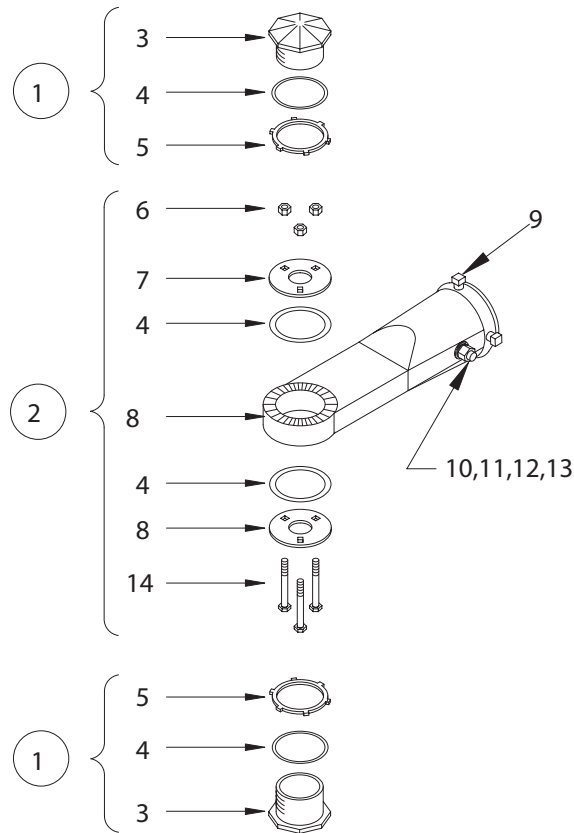


EAGLE MAST ARM RIGID ELEVATOR PLUMBIZER BULLETIN 2301



ITEM	DESCRIPTION	PART NO.	ITEM	DESCRIPTION	PART NO.
①	SIGNAL CLOSURE	A20836	8	PLUMBIZER	Mx2823
②	ELEVATOR PLUMBIZER	*Ax2823	9	SET SCREW (3/8-16)	M50120
3	ORNAMENT CAP	M20872	10	CAP SCREW (3/8-16)	M30391
4	NEOPRENE WASHER	M60615	11	FLAT WASHER (3/8)	M30473
5	CONDUIT NUT	M31040	12	3/8 LOCK WASHER	M31780
6	1/4 KEPS NUT	M30221	13	HEX NUT 3/8-16	A146070
7	CLAMP WASHER	M30417	14	CARRIAGE BOLT (1/4-20)	M30329

*Bulletin 2301x

*x = "2" for aluminum
x = "3" for ferrous
x = "4" for bronze