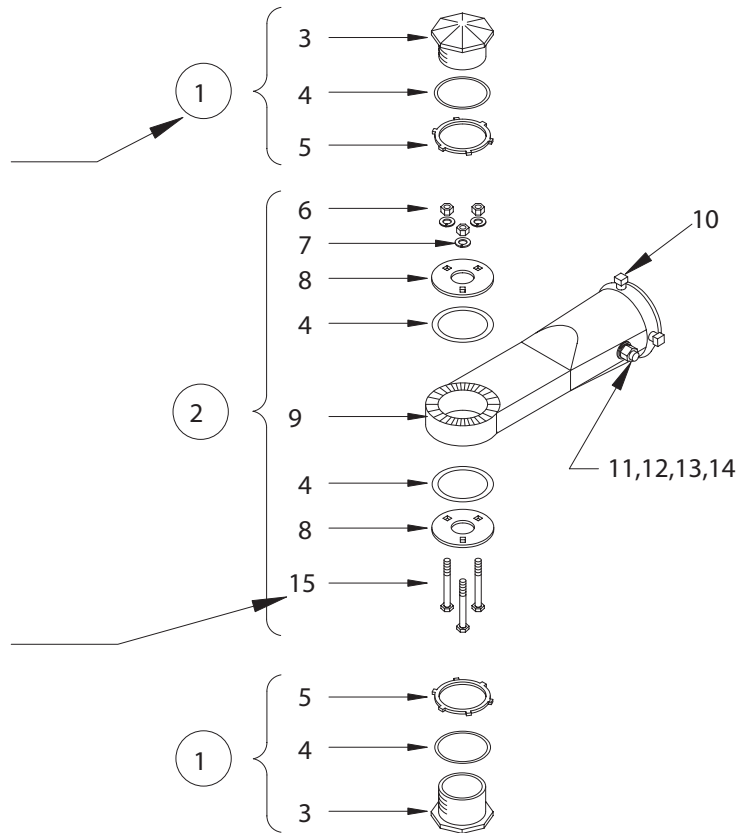


## EAGLE MAST ARM RIGID ELEVATOR PLUMBIZER BULLETIN 2301 (SAMPLE)

ORDER COMPLETE ASSEMBLY USING  
PART NUMBER A20833

**SAMPLE**

ORDER INDIVIDUAL COMPONENT PARTS USING  
PART NUMBER M30329



ITEM	DESCRIPTION	PART NO.	ITEM	DESCRIPTION	PART NO.
①	SIGNAL CLOSURE	A20833	9	PLUMBIZER	M32802
②	ELEVATOR PLUMBIZER	*Ax2823	10	SET SCREW (3/8-16)	M50120
3	ORNAMENT CAP	M20872	11	CAP SCREW (3/8-16)	M30191
4	NEOPRENE WASHER	M60615	12	FLAT WASHER (3/8)	M30480
5	CONDUIT NUT	M31040	13	3/8 LOCK WASHER	M31780
6	1/4 HEX NUT	M30219	14	HEX NUT 3/8-16	M30281
7	1/4 LOCK WASHER	M31749	15	CARRIAGE BOLT (1/4-20)	M30329
8	CLAMP WASHER	M30417			

ORDER ENTIRE CONTENTS OF BULLETIN  
BY USING B2301

\*Bulletin 2301x

\*x = "2" for aluminum  
x = "3" for ferrous  
x = "4" for bronze