

Power

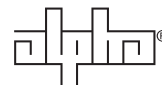
AlphaCell™ FT

Front Terminal AGM & Gel Batteries



- Front terminal design with protective covers
- High power density
- Used for both telecom and cable applications
- Gel long life batteries can be used in outdoor applications

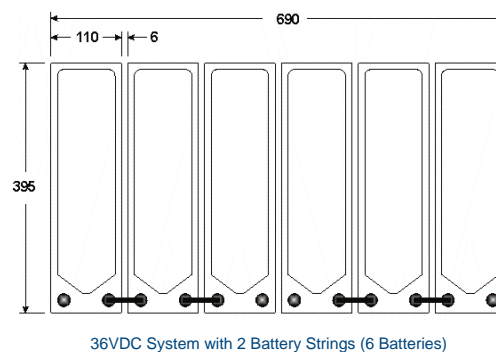
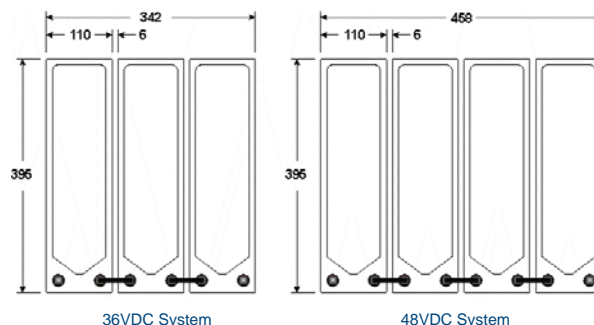
Alpha enhances its AlphaCell battery family to include the FT Series of front terminal batteries for cable television and telecommunication applications. The AlphaCell FT series are valve regulated lead acid batteries and designed for long life. Benefits of these new batteries include: central gassing system, hinged front covers, integral flame arrestor, recyclable lead and plastics and low self discharge rates. These batteries come with a handle for carrying convenience.



AlphaCell FT

Specifications

Model:	195 GXL-FT	225 AGM-FT
Warranty		
Standard:	3 year full replacement	3 year full replacement
For batteries in service below 38th parallel:	2 year full replacement	2 year full replacement
(Optional Extended Warranties available.)		
Service Life:	Extended	Extended
Sealed VRLA:	Valve regulated lead acid	Valve regulated lead acid
Heat Resistant:	High	Moderate
Hydrogen Emission:	Low	Low
Terminals:	16mm Insert M6 thread	16mm Insert M6 thread
Terminal Torque:	5 to 7Nm	5 to 7Nm
Case Material:	ABS (VO on request)	ABS (VO on request)
Battery Type:	Gelled Electrolyte	Absorbed Glass Mat
Typical Runtime (min) ¹ :	195	225
Cells Per Unit:	6	6
Voltage Per Unit:	12.8	12.8
Conductance Value:	1200	1400
(Using Midtronics Meter)		
Max. Discharge Current (A):	400A	400A
Short Circuit Current (A):	3000	3100
10 Second Volts @ 100A:	10.8	11.2
Ohms Impedance 60Hz:	4.1mOhms	4.5mOhms
Capacity at 20hrs: (to 1.75VPC)	110Ah	115Ah
Weight (lb/kg):	76.29/34.52	75.14/34
Height with terminals (in/mm):	11.22/285	11.22/285
Width (in/mm) ² :	4.33/110	4.33/110
Depth (in/mm) ² :	15.55/395	15.55/395
Operating Temperature Range		
Discharge (C):	-40 to 71°C (-40 to 160°F)	-40 to 71°C (-40 to 160°F)
Charge (with temp compensation)(C):	-20 to 50°C (-4 to 122°F)	-20 to 50°C (-4 to 122°F)
Float Charging Voltage (VDC):	Float 2.27 to 2.30VPC @25°C	Float 2.27 to 2.30VPC @25°C
	Cycling 2.35VPC @25°C	Cycling 2.35VPC @25°C
AC Ripple Charger:	0.5%RMS or 1.5% of float charge voltage recommended for best results. Maximum allowed = 4%P-P.	



Notes:
¹ Runtimes at 25A to 1.75VPC @ 25°C. No deep discharge cycling required to obtain maximum runtime ratings.
² Dimensions at battery base.

Current Discharge Table in Amps (End Voltage 1.75VPC)

Hours:	1	2	3	4	6	8	10	12	20	24	48	72	100
195 GXL-FT:	21	38	26.8	21.1	15.2	12	9.9	8.5	5.5	4.60	2.31	1.56	1.13
225 AGM-FT:	81	43.1	30.3	23.7	16.7	12.9	10.4	8.9	5.7	4.80	2.43	1.62	1.18

Typical Standby Time in Minutes @ 25°C/77°F (based on cable load at 0.9 power factor)

XM2 90VAC @	6A	8A	10A	12A	14A	16A	18A	20A
Battery Runtime	Gel/AGM	Gel/AGM	Gel/AGM	Gel/AGM	Gel/AGM	Gel/AGM	Gel/AGM	Gel/AGM
3 batteries:	283/317	195/230	153/173	123/141	100/118	85/99	76/86	67/79
4 batteries:	404/438	280/317	211/242	170/196	145/164	123/141	105/124	91/108
6 batteries:	662/703	467/495	353/392	281/317	230/159	194/227	170/195	153/173
8 batteries:	960/1037	654/691	501/530	403/438	331/369	280/317	242/275	211/242
XM2 60VAC @	6A	8A	10A	12A	14A	16A	18A	20A
Battery Runtime	Gel/AGM	Gel/AGM	Gel/AGM	Gel/AGM	Gel/AGM	Gel/AGM	Gel/AGM	Gel/AGM
3 batteries:	467/498	325/360	246/271	195/225	163/187	142/158	123/141	107/127
4 batteries:	648/691	467/495	353/393	281/317	230/259	194/227	170/195	153/173
6 batteries:	1077/1123	789/835	576/605	461/495	386/420	325/363	280/314	245/276
8 batteries:	1447/1550	993/1068	847/916	654/691	541/582	461/495	403/438	353/393

For more information visit www.alpha.com

Alpha Technologies United States Bellingham, Washington Tel: 360 647 2360 Fax: 360 671 4936
 Canada Burnaby, British Columbia Tel: 604 430 1476 Fax: 604 430 8908

049-018-47-003 (4/08)

Alpha Technologies reserves the right to make changes to the products and information contained in this document without notice.
 Copyright © 2008 Alpha Technologies. All Rights Reserved. Alpha® is a registered trademark of Alpha Technologies. member of The Alpha Group™ is a trademark of Alpha Technologies.
 AlphaCell™ is a trademark of Alpha Technologies.