

SPECIFICATIONS

The Model X Pedestrian Station provides a pedestrian push button that is designed to activate an in-pavement or above ground crosswalk lighting system.

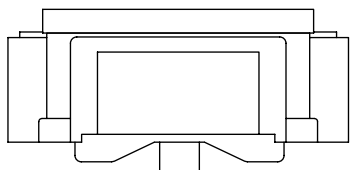
System Includes: Yellow Frame, Sign, 2" ADA compliant push button, mounting hardware. Optional control unit provides audible and light control capability. Control unit supports up to two push button stations (one on each side of the crosswalk).

Audible Option:

**Model XAV:** This model comes with a standard verbal message or the customer can specify a custom message that will play immediately following the button push. The volume of the message automatically adjusts to compensate for ambient noise.

**Push Button:** This device comes with an extremely rugged and vandal resistant button. This button has a switch life of greater than 20 million cycles, can withstand severe impacts, and cannot be made to "stick on".

**LED Option:** Yellow LEDs in the sign flash indicating the crosswalk lights are on. Add "-LED" to the model number if LEDs desired.



INFORMATION ON THIS DOCUMENT IS PROPRIETARY TO POLARA AND SHALL NOT BE USED, COPIED, REPRODUCED OR DISCLOSED IN WHOLE OR IN PART WITHOUT WRITTEN CONSENT OF POLARA.

Revised - 03/07/06										<b>POLARA ENGINEERING INC.</b> 4115 W. ARTESIA AVE. FULLERTON, CA. 92833					
										TOLERANCES: .XXX ±.005 .XX ±.02 (EXCEPT AS NOTED)				SCALE .4:1	
DRAWN BY		CKR.		ENG. MGR.		MFG. MGR.		SHEET 1 OF 2							
DATE		DSN. ENG.		Q.A. APP.		FINAL APP.		USE							
05-26-00															
TITLE										MODEL X					
										DWG. NO. X					
REV.	DATE	LTR	E.C.O. NO.	BY	CKR	ENG	DSN	MFG	QA	FNL					

Control Unit for Model XAV

Power Requirements: 115 VAC, 60Hz, 0.1A  
 Audio Amplifier Power Output: 10W RMS, into 8Ω.  
 Volume Control: On board trimming potentiometer for overall adjustment.  
 Volume Control Automatic Adjustment Range: 45dB  
 Microphone for Ambient Noise: Frequency Range: 100Hz to 8kHz  
 On board sensitivity adjustment.  
 Ped Push Button Interface: Connects between pushbuttons and flash control system. Provides contact closure output.  
 Jumper Selectable Options: Two jumpers configure the message to be repeated one, two, three or four times.  
 LTS IN: Connects to field lighting. Sound output inhibited until voltage appears on LTS IN.  
 Input Range: 10–130 volts AC/DC – Use jumper for < 50 volts.  
 LED OUT: Connects to LED IN on Push Button Station. Flashes sign LEDs in sync with signal on LTS IN. 15VDC, .25A Max.  
 Dimensions: L6" x W4<sup>3</sup>/<sub>8</sub>" x H1<sup>3</sup>/<sub>4</sub>"  
 Mounting: Mounts inside cabinet that houses crosswalk lighting control system or can be mounted in a separate external mounting box.  
 Voice Message: A message up to 16 seconds long that can play immediately following a button push.  
 Push Button Station:  
 Frame: Cast Aluminum, Powder Coated Yellow  
 Speaker: 8Ω, 15W MAX, Weatherproof (Model XAV only)  
 Push Button: Solid State Switch 2" ADA Style Vandal Resistant Button  
 LEDs: Row of 4 LEDs

DC Power Input Options:

Add "-DC" to model number

Power Requirements:

10–18 VDC Recommended.  
 9mA current draw when idle.  
 300–400mA peak current when playing at higher volume levels not including LED output current.

INFORMATION ON THIS DOCUMENT IS PROPRIETARY TO POLARA AND SHALL NOT BE USED, COPIED, REPRODUCED OR DISCLOSED IN WHOLE OR IN PART WITHOUT WRITTEN CONSENT OF POLARA.

REV —	REV. DATE 03-07-06	TOLERANCES: .XXX ±.005 .XX ±.02 (EXCEPT AS NOTED)			TITLE MODEL X	DWG. NO. X
ECO	DATE CREATED 05-26-00	SCALE	SHEET OF 2 2	USE		