



# E-Lite 5GHz

300 Mbps Wireless Broadband System 5.180-5.825GHz

## OVERVIEW

The ENCOM E-LITE 5GHz unit represents an industry first low cost solution for enterprises and municipalities. Built for high data throughput and backbone applications in mind, the ENCOM E-LITE 5GHz Solution is ideal for Wireless City projects and critical high-speed communications.

## PERFORMANCE AND SCALABILITY

ENCOM's E-LITE Solutions draw on all the strengths of the COMMPAK and Energy solutions to provide standard-setting data rates, enhanced security and the dependability that ENCOM is known for at an affordable price.

ENCOM'S E-LITE Solutions are fully compatible with all ENCOM ENERGY, COMMPAKBB and other manufacturers of 802.11a/n compliant broadband devices offering you the flexibility to quickly and easily deploy a fast and efficient wireless ecosystem. By adhering to IEEE 802.11 standards and offering features such as

Dynamic Frequency Selection, Traffic Prioritization and OFDM technology the COMMPAK 5GHz Broadband Solution is highly resilient to RF interference while providing best-in-class transmission data rates and enhanced security features such as WPA, WPA2, TKIP, AES, MAC and RADIUS authentication.

## ENCOM STRATOS+ SOFTWARE

ENCOM's STRATOS+ software makes setting up and configuring your wireless network a breeze. With profile based configurations, built-in diagnostic and alignment tools as well as network mapping and robust security features STRATOS+ makes monitoring and maintaining your network an easy and centralized process.

ENCOM's proven wireless hardware solutions coupled with unparalleled management and diagnostic software (included free of charge with all units) provide the fast and reliable networks that enterprises and municipalities all over North America have come to expect.

## Key Features:

- Up to 300Mbps
- RSSI LED and Reset functionality built-in
- High Power 1000 mW transmitter allows range in excess of 20 miles (LOS)
- IEEE 802.11a/n standards and proprietary E-max.
- Every unit supplied with STRATOS+ diagnostics, monitoring and maintenance tool free of charge
- 10/100/1000 PoE interface

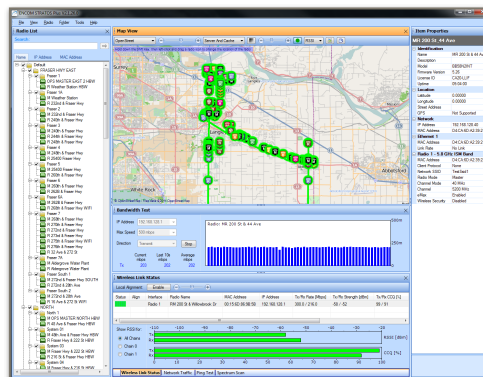
## Key Benefits:

- Celebrating 25 years of broad industrial wireless experience.
- Unparalleled software management tools
- Scaleable and future proof technology platforms
- Unequalled warranty and support programs
- Easily defined and measurable ROI
- Interoperable with solutions from other vendors

## Applications:

- Intelligent Transportation Systems
- Water/Waste Water Management
- Utilities
- Industrial SCADA
- Private Networks

[WWW.ENCOMWIRELESS.COM](http://WWW.ENCOMWIRELESS.COM)



STRATOS+ Management Software

*Celebrating  
25 years  
of  
Industry Leadership*

# E-Lite 5 GHz

## 5.150 - 5.825GHz BROADBAND SPECIFICATIONS

Physical Specifications			
	Non-Integrated Unit	Integrated Antenna Unit	Access Point Cluster
<b>Dimensions:</b> <b>Weight:</b> <b>Environmental:</b> <b>Antenna Type:</b> <b>Operating Temperature:</b> <b>Radio Units:</b>	<ul style="list-style-type: none"> <li>8.6"x8.6"x3.17"</li> <li>Weight: 3 lb.</li> <li>IP67 Weatherproofing rating</li> <li>External Panel, Sector, OMNI</li> <li>-40°C to +80°C @ 95% humidity</li> <li>Up to 2</li> </ul>	<ul style="list-style-type: none"> <li>15.25"x15.25"x4.5"</li> <li>Weight: 5 lb.</li> <li>IP67 Weatherproof rating</li> <li>20 dBi Panel Antenna</li> <li>-40°C to +80°C @ 95% humidity</li> <li>Up to 2</li> </ul>	<ul style="list-style-type: none"> <li>12.5"x9.3"x5.8"</li> <li>Weight: 8 lb.</li> <li>IP67 Weatherproof rating</li> <li>External Sector Antenna</li> <li>-40°C to +85°C @ 95% humidity</li> <li>Up to 4</li> </ul>
Wireless Interface		Networking Features	
Frequency Range	5.150 - 5.825GHz	802.11e	WMM and QOS
Peak Transmit Power	30 dBm (1000 mW)	802.11h	DFS and TPC
Receive Sensitivity	-94 dBm to -74 dBm	802.1d	Ethernet Bridging
Channel Widths	20MHz and 40MHz	802.1p	Traffic Prioritization
Modulations	OFDM, BPSK, QPSK, 16QAM, 64QAM	802.1q	VLAN
Protocol	IEEE 802.11a/n, E-max (proprietary)	802.1s	Spanning Tree
Data Rate	Up to 300Mbps (MCS0-15)	802.1w	Rapid Spanning Tree
MIMO	2x2	802.3-1998	Ethernet
Topology	Point-to-point, Point-to-Multipoint	802.3ab	Gigabit Ethernet
IEEE Wireless Networking and Security Features		802.3ac	Extended Frame Size for 802.1q & 802.1p support
<ul style="list-style-type: none"> <li>Bursting</li> <li>Compression</li> <li>Dynamic Ack Timeout</li> <li>TLS EAP Method</li> <li>Passthrough EAP Method</li> <li>Hardware Retries</li> <li>Preamble Mode</li> <li>Periodic Calibration</li> <li>Disconnect Timeout</li> <li>On-fail Retry</li> <li>CSMA Disable</li> <li>Station Channel Scan list</li> <li>EMAX proprietary protocol</li> </ul>	<ul style="list-style-type: none"> <li>802.11i-WPA-PSK</li> <li>802.11i-WPA2-PSK</li> <li>802.11i-WPA-EAP</li> <li>802.11i-WPA2-EAP</li> <li>802.11i-TKIP</li> <li>802.11i-AES-CCM</li> <li>802.11i-802.1x</li> <li>802.11i-RSN</li> <li>Radius Authentication</li> <li>MAC Access Control List</li> <li>FCC 15.247</li> <li>IC RSS-210</li> <li>RoHS Compliant</li> </ul>	802.3ad	Link Aggregation/Port Bonding/Port Trunking
		802.3i	10 Mbps Ethernet
		802.3u	100 Mbps Ethernet and Auto-Negotiation
		802.3x	Full Duplex and Flow Control
		ENCOM STRATOS+ (included free with every unit)	
<ul style="list-style-type: none"> <li>Profile base configurations with SQL database</li> <li>Real-Time RSSI, Network Traffic and user-defined color coded link status.</li> <li>Bandwidth Testing</li> <li>Audio Alignment tool</li> <li>Client Connection Quality</li> <li>System Wide Ping Tool</li> <li>IP Discovery Tool</li> <li>Network Mapping with Auto-Geo Location for GPS enabled units.</li> <li>User defined email alerts for maintenance personnel for change in online status, decreased signal levels (dBm), CCQ and changes in data rate</li> <li>Streamlined device programming and ability to manage all devices from a central location</li> </ul>			
Additional Networking Features			
<ul style="list-style-type: none"> <li>OSPF</li> <li>FTP/TFTP</li> <li>HTTP</li> <li>Telnet</li> <li>SSH</li> <li>SNMP</li> <li>RJ45 10/100/100 PoE+Data Out</li> <li>Syslog</li> <li>Routing</li> <li>Firewall / NAT</li> <li>NTP</li> <li>VPN</li> <li>DHCP Client / Server</li> </ul>			
Ordering Options			
<ul style="list-style-type: none"> <li>E-Lite 58 INT: Single Radio with Integrated Dual Polarity Panel Antenna</li> <li>E-Lite 58 INT Dual: Dual Radio with Integrated Dual Polarity Panel Antenna and (2x) External Type-N Female Connectors</li> <li>E-Lite 58 EXT: Single Radio with (2x) External Type-N Female Connectors</li> <li>E-Lite 58 EXT Dual: Dual Radio with (4x) External Type-N Female Connectors</li> </ul>			

ENCOM Wireless Data Solutions Inc.  
 3750 Arapaho Rd.  
 Addison, TX 75001, United States.  
 Phone (972) 885-5170  
 Fax (214) 736-5749  
 Email: sales@encomwireless.com  
[WWW.ENCOMWIRELESS.COM](http://WWW.ENCOMWIRELESS.COM)



\*ENCOM Broadband radios require professional installation.  
 Specifications subject to change without notice. Visit [www.encomwireless.com](http://www.encomwireless.com) for updates.