



COMMPAK BB 5.8GHZ

Point-to-Multipoint Single, Dual and Integrated Radios 5.150-5.825GHZ



OVERVIEW

The COMMPAK 5GHz Broadband Solution has been the industry standard for reliable communications, top of the line security and the highest data throughputs. Backed by ENCOM's 25 years of experience the COMMPAK 5GHz Broadband Solution is the trusted choice for industrial, ITS and private networks.

SECURITY AND DEPENDABILITY

ENCOM's COMMPAK Broadband Solutions offer you the flexibility to quickly and easily deploy a fast and efficient wireless ecosystem. By adhering to IEEE 802.11 standards and offering features such as Dynamic Frequency Selection, Traffic Prioritization and OFDM technology the COMMPAK 5GHz Broadband Solution is highly resilient to RF interference while providing best-in-class transmission data rates and enhanced security features such as WPA, WPA2, TKIP, AES, MAC and RADIUS authentication.

ENCOM STRATOS+ SOFTWARE

ENCOM's STRATOS+ software makes setting up and configuring your wireless network a breeze. With profile based configurations, built-in diagnostic and alignment tools as well as network mapping and robust security features STRATOS+ makes monitoring and maintaining your network an easy and centralized process.

ENCOM's proven wireless hardware solutions coupled with unparalleled management and diagnostic software (included free of charge with all units) provide the fast and reliable networks that enterprises and municipalities all over North America have come to expect.

*Celebrating
25 years
of
Industry Leadership*

Key Features:

- Up to 108Mbps
- Each radio can perform as Master, Remote or Repeater
- 600 mW transmitter allows range in excess of 20 miles (LOS)
- Power over Ethernet.
- Every unit supplied with STRATOS+ diagnostics, monitoring and maintenance tool free of charge
- Extensive suite of security features

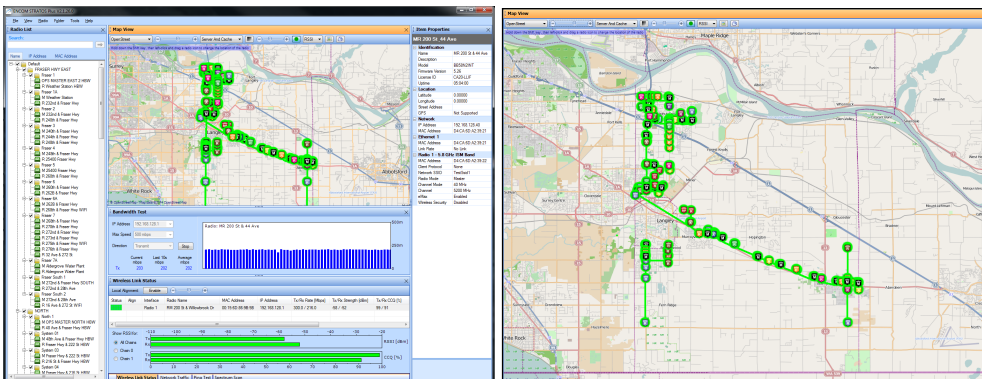
Key Benefits:

- Celebrating 25 years of broad industrial wireless experience.
- Unparalleled software management tools
- Scalable and future proof technology platforms
- Unequaled warranty and support programs
- Easily defined and measurable ROI
- Interoperable with solutions from other vendors

Applications:

- Intelligent Transportation Systems
- Water/Waste Water Management
- Utilities
- Industrial SCADA
- Private Networks

WWW.ENCOMWIRELESS.COM



STRATOS+ Management Software

COMMPAK BB 5.8GHz

5.150 - 5.825GHz BROADBAND SPECIFICATIONS

Physical Specifications			
Dimensions: Weight: Environmental: Antenna Type: Operating Temperature: Radio Units:	Non-Integrated Unit <ul style="list-style-type: none"> 8.5"x8.5"x3" Weight: 3 lb. IP67 Weatherproofing rating External Panel, Sector, OMNI -40°C to +85°C Up to 2 	Integrated Antenna Unit <ul style="list-style-type: none"> 13"x13"x3.5" Weight: 5 lb. IP67 Weatherproof rating 23 dBi Panel Antenna -40°C to +85°C Up to 2 	Access Point Cluster <ul style="list-style-type: none"> 12.5"x9.3"x5.8" Weight: 8 lb. IP67 Weatherproof rating External Sector Antenna -40°C to +85°C Up to 4
	Wireless Interface		Networking Features
Frequency Range	5.150 - 5.825GHz	802.11e	WMM and QOS
Peak Transmit Power	28 dBm (600 mW)	802.11h	DFS and TPC
Receive Sensitivity	-94 dBm to -74 dBm	802.1d	Ethernet Bridging
Channel Widths	5MHz, 10MHz, 20MHz and 40MHz	802.1p	Traffic Prioritization
Modulations	OFDM, BPSK, QPSK, 16QAM, 64QAM	802.1q	VLAN
Protocol	802.11a, eMAX (proprietary)	802.1s	Spanning Tree
Topology	Point-to-Point, Point-to-Multipoint, MESH	802.1w	Rapid Spanning Tree
IEEE Wireless Networking and Security Features		802.3-1998	Ethernet
<ul style="list-style-type: none"> Bursting Compression Dynamic Ack Timeout TLS EAP Method Passthrough EAP Method Hardware Retries Preamble Mode Periodic Calibration Disconnect Timeout On-fail Retry CSMA Disable Station Channel Scan list eMAX proprietary protocol 	<ul style="list-style-type: none"> 802.11i-WPA-PSK 802.11i-WPA2-PSK 802.11i-WPA-EAP 802.11i-WPA2-EAP 802.11i-TKIP 802.11i-AES-CCM 802.11i-802.1x 802.11i-RSN Radius Authentication MAC Access Control List FCC 15.247 IC RSS-210 RoHS Compliant 	802.3ab	Gigabit Ethernet (3 and 4 radio cluster unit)
		802.3ac	Extended Frame Size for 802.1q & 802.1p support
		802.3ad	Link Aggregation/Port Bonding/Port Trunking
		802.3i	10 Mbps Ethernet
		802.3u	100 Mbps Ethernet and Auto-Negotiation
		802.3x	Full Duplex and Flow Control
ENCOM STRATOS+ (included free with every unit)			
<ul style="list-style-type: none"> Profile base configurations with SQL database Real-Time RSSI, Network Traffic and user-defined color coded link status. Bandwidth Testing Audio Alignment tool Client Connection Quality System Wide Ping Tool IP Discovery Tool Network Mapping with Auto-Geo Location for GPS enabled units. User defined email alerts for maintenance personnel for change in online status, decreased signal levels (dBm), CCQ and changes in data rate Streamlined device programming and ability to manage all devices from a central location 			
Additional Networking Features			
<ul style="list-style-type: none"> OSPF FTP/TFTP HTTP Telnet SSH SNMP RJ45 10/100 PoE+Data Out 		<ul style="list-style-type: none"> Syslog Routing Firewall / NAT NTP VPN DHCP Client / Server 	
Ordering Options			
<ul style="list-style-type: none"> BB58 INT: Single Radio, Integrated 23 dBi Panel Antenna. BB58 EXT: Single Radio with (1x) N-Female Connector for External Antenna. BB5858 INT Dual: Dual radio with Integrated 23 dBi Panel Antenna and (1x) N-Female Connector for External Antenna. BB5858 EXT Dual: Dual Radio with (2x) N-Female Connector for External Antennas. 			



*ENCOM Broadband radios require professional installation.
 Specifications subject to change without notice. Visit www.encomwireless.com for updates.

ENCOM Wireless Data Solutions Inc.
 3750 Arapaho Rd.
 Addison, TX 75001, United States.
 Phone (972) 885-5170
 Fax (214) 736-5749
 Email: sales@encomwireless.com
WWW.ENCOMWIRELESS.COM